

Unique Retreats

Norfolk, Somerset, Kent, Dorset, Devon, Cornwall

If you appreciate the combination of home comforts and glorious surroundings, you'll love our accommodation providers in the southern swathe of the country. Let Nature ease away the strain of modern living as you awaken to lush landscapes among woods, wildflowers, birdsong and beauty before setting out to explore.

Luxurious yurts on the Raynham estate put you at the gateway to the North Norfolk coast and countryside, just 10 miles from the port town of Wells-next-the-Sea. Owley Woods is perfectly placed for walking the Mendips Somerset's awesome Cheddar Gorge and caves, while the cossetting cabins and hot tubs of scenic Wampford Woodland Retreat in Devon are handy for the A377 to either Barnstaple or Exeter and the beautiful beaches of the North Devon coast.

Glamping gives the eco-conscious a real buzz at Blean Bees, Kent, close to the medieval market town of Faversham and history-rich Canterbury, while Dorset's Coppet Hill is a family friendly location near the friendly town of Bridport, perfectly placed for fossil hunting on the Jurassic coast, including the seaside towns of Lyme Regis and West Bay.

Luxury holiday homes in St Ives give holidaymakers easy access to some of Cornwall's best loved attractions. Art lovers will find themselves spoiled for choice in this pretty seaside town, famed as the heart of the British Modernist art movement from the 1940s. Don't miss the Barbara Hepworth Museum, the Bernard Leach Pottery & Museum and Tate St Ives.

Norfolk

GLAMPING AT WILD MEADOW, RAYNHAM ESTATE

Relax and unwind at Wild Meadow Glamping, situated on the historic Raynham Estate. Wild Meadow is the perfect base to explore the surrounding Norfolk countryside and the stunning north Norfolk coast which is just 20 minutes away.

This intimate site with just 8 luxury yurts, including some new en-suite yurts are all named after the wildflowers which grown on the site and offers cosiness with handcrafted beds, individual showers, wood burners and home comforts whilst sleeping under the stars.

Raynham.co.uk/stay



Somerset



Located on The Mendip Hills overlooking Cheddar Village and Cheddar reservoir, we are tucked away in an area of outstanding natural beauty surrounded by spectacular views, amazing sunsets and dark skies for stargazing, it really is a fantastic location. Situated on the West Mendip Way with footpaths direct from Owley leading to Cheddar Village with its many tea rooms, pubs and restaurants, Cheddar Gorge and the Mendip Hills is the perfect location for you if you enjoy an active break or just need to chill. Ideal for walking, hiking, climbing, caving, cycling or just relaxing and listening to the birds and the owls. Just five spacious fully equipped Lotus Belle Tents have exclusive use of the one-acre paddock with flushing toilets and hot showers. Adults only and dogs are welcome.



www.owleywoods.co.uk
hoot@owleywoods.co.uk 07967 953637
Owley Woods, Bradley Cross, Cheddar, Somerset, BS27 3Y

Kent



Blean Bees Eco Stays

Our eco-glamping area is set within seven acres, divided into pasture for our small flock of Jacob sheep, a young orchard of mixed fruit and an area currently being planted up with mixed native trees to blend the grassland into woodland as it meets 'The Blean'. There are a few beehives at the bottom near the woodland, which enjoy a wide range of natural habitat that surrounds the land.

We have bell tent camping options and also a fantastic eco shepherd's style hut. We are located on a remote quiet lane overlooking The Blean, a woodland which is ideal for cyclists and walkers.

To book, please fill in the enquiry form on our website or simply send an email to bleanbees@gmail.com

Or to ask any details, please call Tilly on 07462 556479  

Devon

Wampford Woodland Retreat is located in an unspoiled corner of Devon and nestled in undisturbed woodland with outstanding countryside views.

Each luxury cabin comes beautifully crafted and styled inside and out with many features including hot tub and wood burner. The perfect idyllic retreat. Wampford Woodland Retreat offers a peaceful and quiet setting yet is only 30 minutes from the coastline.

Our cozy cabins are the perfect getaway to enjoy a log cabin holiday here in Devon.



www.wampfordwoodlandretreat.co.uk
Call 07811 427 295 Email info@wampfordwoodlandretreat.co.uk
 Wampford Woodland Retreat Kings Nympton, Devon, EX37 9TG

Dorset

Coppet Hill

Just three miles from the Jurassic Coast, and surrounded by some of Dorset's most spectacular hills, Coppet Hill, a 600-acre family farm, is a peaceful haven for walkers, campers and wildlife lovers.

Perched on a hillside with commanding views across the Marshwood Vale and its spectacular hill forts, the Landpod at Little Coppet is the perfect spot to light a barbecue, enjoy the sunset, and wait for Dorset's famous dark skies to reveal the Milky Way and shooting stars!

The Landpod has a double bunk bed, comfortably sleeping 2 adults and 2 children. Everything is provided, your own shower, compost loo and kitchen as well as a firepit, picnic bench and deck chairs to soak in the stars at night.

Please use reference code **CLLMSPR22** when booking
hello@coppethill.co.uk 07966 849876
www.coppethill.co.uk
 @coppethill  @CoppetHill



Cornwall

HUNTER HOUSES

St Ives Holiday Rental Cornwall

Luxury holiday homes located in the beautiful coastal town of St Ives, Cornwall. All properties a short walking distance from the iconic harbour.

To find out more or to book please find us on facebook, visit our website or call on 07547 116100

 @hunterhouses1 www.hunterhouses.co.uk



Unique Retreats

East Sussex, West Sussex, Shropshire, Wiltshire, Hampshire, Yorkshire Wolds

If you like 'quirky' as well as 'super-comfortable,' you'll love the American school bus-turned-luxury-holiday-accommodation of the Wildaway hideaway of East Sussex. With a reputation honed on TV, it's at Latchetts Lakes, in exceptional walking country and within easy reach of Brighton and the South Downs National Park.

At Oakwood West Holidays in West Sussex, stables have been transformed into superb holiday lodges with hot tubs near the Georgian city of Chichester, where the ancient harbour is a hot spot for sailing and also an outstanding nature reserve. Don't miss the long, sandy West Wittering beach nearby.

Shropshire offers another unique location, the luxurious glamping village of Hencote Wine Estate, with an on-site restaurant making best use of both its own and carefully selected international wines. The vineyards are close to charming Shrewsbury and the mighty educational opportunities of Ironbridge Gorge, 'Birthplace of the Industrial Revolution,' with its array of museums and hands-on experiences.

Get close to nature at Chestnut Shepherd's Hut, Hampshire, but don't miss out on the medieval charms of Winchester or the unique exhibits of Portsmouth Historic Dockyard, including the Tudor warship Mary Rose, Nelson's flagship HMS Victory and the viewing platforms of Spinnaker Tower.

Another idyllic setting for a shepherd's hut break is at the Hare's Rest near Trowbridge, Wiltshire, with exquisite walking, cycling and wild swimming nearby. Wold Meadow is another glampsite with personality. For adults only, it sits in the Yorkshire Wolds, between the ever-popular seaside resorts of Filey and Bridlington.

East Sussex

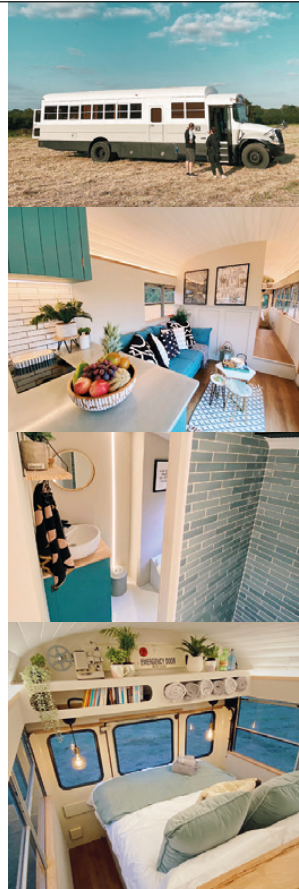
WILD AWAY

Everybody is craving more time in their lives for nature so we asked ourselves the question, "Can we help get people out into nature without sacrificing home comforts?". We found an answer - this stunning American School Bus conversion.

We shipped a bus over from New York, cut the ceiling off to raise it 1.5 feet (for MORE headspace), built a luxury 3 room hotel suite inside (including a flushing household toilet), Italian tiles in the bathroom, induction hobs, farmhouse sink, and cut a hole big enough for a double glazed window in front of the sofa. You may have seen us on Discovery+, QuestTV or Channel 5 but we'd love you to come and stay to see it for yourselves.

www.wildawaybus.com
07966 692716

Latchetts Lakes
East Sussex



West Sussex



Our cottages are beautifully converted Stables buildings and two newly built timber clad lodges. They are modern, comfortable and spacious dwellings for you and your guests.

Every effort has been taken to make each accommodation truly special, with luxury bedding, creatively designed interiors, stunning bathrooms and modern fully equipped kitchens. Outside you'll find your private hot tub next to garden sofas and a BBQ. The garden for each cottage is fully enclosed, perfect for children and a dog (excl. Meadow Hide).

These cottages are the perfect place to get away from it all with your family and friends.

www.oakwoodwestholidays.co.uk

Email: oakwoodwestleisure@gmail.com Call: 07900 350102
The Osiers, Clay Ln, West Ashling, Chichester PO18 8DJ



Shropshire



Relax in style at Hencote

There's no better place to spoil yourself in style than the Hencote wine estate. The vineyard – which sits on the edge of Shrewsbury town centre and commands magnificent views across Shropshire – is the perfect place to get away and pamper yourself. Its exceptional glamping village is ideal for a fabulous staycation, romantic retreat, weekend break or midweek getaway, with a fabulous all-inclusive package featuring a wine tour, dining at Hencote's stunning restaurant and hot tub. Stays are available from a minimum of two nights. The village offers the perfect base to enjoy Hencote's award-winning wines – it is the UK's most successful red wine producer – enjoy its sumptuous food and savour the ultimate outdoor break.

For the perfect stay visit <https://www.hencote.com/>






Hampshire

Chestnut Shepherd's Hut

Hampshire

Set in a large enclosed field in the heart of Hampshire, with access to a private woodland, adjacent to the field where seasonal wild flowers and garlic grow – which you are free to harvest, if you are a garlic lover! We can recommend making your own delicious garlic pesto or butter.

For your comfort, there are two double beds, a woodburner-heated shower room, TV & private parking. There is also a fire pit for you to enjoy, weather permitting.

Situated between the medieval city of Winchester and the 'Gateway to England' Southampton, with great links to the M3 and M27 to travel to Portsmouth Historic Dockyard and the fun-filled Paultons Park. Other local attractions include Marwell Zoo and The Itchen Navigation.

To find out more or to book call or email **Debbie 07875671058**
debra.beecham@aol.co.uk



Wiltshire

Hare's Rest

Hidden away in the Wiltshire countryside, you'll find a traditional shepherd's hut which has been transformed into luxury accommodation for two. This is an idyllic escape for nature lovers who want to get a little closer to wildlife and enjoy a picturesque part of the British countryside. Hare's Rest is located in a beautiful valley where the hillsides are home to famous chalk carvings of white horses.

The hut may have cosy dimensions, however, you'll find everything you need here for a delightful escape from the hustle and bustle of everyday life. The kitchen area is equipped with a gas hob, fridge/freezer and a large sink, everything you need to rustle up hearty meals after some long walks.

Also available is The Hoot, a quirky converted horse box named after the local owls that can be heard most nights.

To book please call Ruth on 07702 308559

The Lodge, Hoggington Lane,
Southwick, Wiltshire, BA14 9NR



Yorkshire Wolds

Located in a peaceful corner of the stunning Yorkshire Wolds, close to the Yorkshire Coast. Our rural site includes six spacious circular Yurts with outdoor hot tubs and log burners.

Our site is for adults only so it's a child-free zone for your staycation. We have good onsite facilities including showers, toilets and cooking areas. Each of these luxurious, circular, canvas dwellings has its own personality, tastefully decorated and colour-coordinated with a wildlife theme. We've combined all the elements of the finest glamping holiday, including fire pits, bbqs all tucked away in a rural location.



www.woldmeadow.co.uk
T. 07765 283798 E. info@woldmeadow.co.uk
YO25 3HL Driffild



FEATURED

Unique Retreats

Cheshire, Pembrokeshire,
Peak District, Conwy,
Cumbria, Flintshire

Peace, quiet and tranquillity are on offer at the adults-only site of Welltrough Hall Farm, Cheshire, an extensive farmland glampsite within easy reach of the Peak District National Park and the vibrant town of Macclesfield. In the heart of the park, Kiss Wood Cabins offers luxury pods in a wildlife haven where deer visit every day.

The area is replete with great walks and cycle trails, while Jodrell Bank Observatory will be opening its new First Light Pavilion on June 4 in a £21.5 million project bringing stories of groundbreaking space science to more people. In the pleasant town of Knutsford, Tatton Park is a popular visitor attraction with its Tudor hall, grand mansion and superb gardens.

Hadrian's Wall Glamping has pet-friendly Mongolian-style yurts with private hot tubs in the Cumbrian countryside, close to the famous stone barrier which the Romans built coast to coast.

Turning attention to the rural charms of Wales, Little Welsh Wood is an excellent, eco-friendly camping/glamping base from which to enjoy the history, heritage and brilliant beaches of the Pembrokeshire Coast National Park, not to mention the trendy new Milford Haven Waterfront destination with its boutique shops and restaurants.

Cefn Ffynnon Glamping offers a beautiful en-suite cabin with hot tub and spectacular views over Snowdonia National Park, known for its great beauty and world class adventure attractions, while Logfire Holidays offers a cottage, shepherd's hut and a Romany caravan in rural Flintshire, within half an hour's drive of the north coast.

Cheshire

Welltrough Hall Farm is situated just outside the village of Lower Withington in the beautiful Cheshire countryside. The site offers peace and quiet with stunning views overlooking our 270 acre farm and beyond. We are an adult only site with dogs allowed providing they are kept on a lead. There are 4 glamping pods with their own toilets and showers as well as a kitchen and double bed, all have their own electric heated hot tubs. We also have a Shepherd's hut which contains a large kitchen area as well as a double bed and its own toilet and shower, as well as an electric heated hot tub.

There is a public footpath that runs through the far field on the farm as well as numerous walks in the area. Our site is well positioned for easy reach to local shops, banks and eating out.



www.welltroughglamping.co.uk
welltroughglamping@gmail.com +44 (0) 7734605965
Welltrough Hall Farm, Lower Withington, Cheshire, SK11 9EF

Pembrokeshire


Little Welsh Wood

Located in the Pembrokeshire Coast National Park, with the spectacular coast path nearby, Little Welsh Wood is ideal for visiting the many sandy beaches around St Brides Bay and the National Nature Reserve of Skomer Island. We are perfectly placed for exploring coastal and inland Pembrokeshire.

Our small and quiet site will appeal to adults and families who want to enjoy the simple pleasures of woodland camping along with walking and bird watching or to just sit and relax. Most of our pitches have private toilet and shower facilities and our meadow is a great space for walking the dog, children to let off steam or enjoy a campsite cricket match!



www.littlewelshwood.co.uk
Email. info@littlewelshwood.co.uk **Tel.** 07861 397706 
Little Welsh Wood, Robeston West, Pembrokeshire, SA73 3TL

Peak District

Surrounded by breathtaking countryside in the Peak District National Park, We offer luxury en suite glamping accommodation at our family farm in Wincle, Cheshire.

Take advantage of our peaceful picturesque location, where you can explore and go wild or simply relax and take in the unspoilt landscape and wildlife around you.

You can watch the wildlife right at your door and star gaze in the peaceful and remote wilderness with the luxury of a double bed, en suite and even a hot tub to unwind in.

Our pods are suitable for all seasons with each season spectacularly different from the last, your only hard decision is when to join us!




www.kisswoodcabins.co.uk
Tel: 07714831157
Email: kisswoodcabins@mail.com
Nettlebeds Farm, Wincle,
Nr Macclesfield, Cheshire SK11 0QG

Conwy


Cefn Ffynnon Glamping

Nestled in the foothills of the world-famous Snowdonia National Park, this handcrafted cabin has been perfectly set-up for a tranquil countryside escape to North Wales. Dôl y Mynydd, meaning 'The Mountain Meadow' in native Welsh, sits in its own private wildflower garden and enjoys simply stunning views over Snowdon and the dramatic rolling landscape.

Sitting peacefully in its surroundings, the beautifully appointed cabin is luxuriously furnished with a small kitchen, super comfy bed and an en-suite bathroom, and contains gorgeous hot tub outside which perfectly soaks up the sun and spectacular views. Sit out with a glass of wine or beer on the wooden terrace with a table and chairs for al fresco dining and simply relax in the gloriously wild setting.






For more information or to book call Sara **07815108760**, email saracefnffynnon@gmail.com or Find us on **Facebook** [@cefnffynnonglamping](https://www.facebook.com/cefnffynnonglamping)



Cumbria

HADRIAN'S WALL COUNTRY YURTS

Our beautiful, traditional Mongolian style yurts sit amongst the rugged Cumbrian countryside near to the historic Hadrian's Wall. The three quarter acre glamping site, with just two yurts each with their own private hot tub, offers plenty of space to relax, play and roam.

This peaceful and secluded hide-away is ideal for exploring, relaxing and reconnecting with yourself, your friends and your family. The perfect escape, so leave your busy lives at home, unwind and enjoy a wonderful few days away at Hadrian's Wall Country Yurts.



www.hadrianswallglamping.com  
staying@hadrianswallglamping.com +44 7990704920
Hadrian's Wall Country Yurts, Burthorpe, Walton, CA8 2JW

Flintshire


Logfire Holidays
Cosy Self-catering Holidays in North Wales

We offer a fabulous choice of accommodation in the grounds of our 17th Century farmhouse, nestled in the heart of the beautiful North Wales Clwydian range. Choose between a fully equipped self-catering Barn Conversion, a wonderfully romantic, high quality Shepherds' Hut, and a genuine 'glamping heaven' Bow-Top Gypsy Wagon.

We are committed to delivering a premium holiday location at reasonable prices. Read some of the reviews delighted guests left on our website in 2021 and then come and discover what makes our hilltop retreat so special.



www.logfireholidays.co.uk
Tel. 07884 493945 **Email.** nicola.todman@logfireholidays.co.uk
Logfire Holidays, Coed Y Mynydd Isaf, Bryn Eithin Road, Afonwen, Flintshire

Unique Retreats

North Wales, Powys, Swansea, Lake District, Northamptonshire, Carmarthenshire

Northamptonshire is rarely known as a holiday destination, but the delightful Featherbed complex offers glamping and B&B in a rural idyll near the pleasant market town of Brackley, close to the borders of Oxfordshire and Buckinghamshire. Attractions within striking distance include Blenheim Palace, the Second World War code-breaking centre of Bletchley Park and the academic heritage to be found among the dreaming spires of Oxford.

The beauty of the Lake District – now a UNESCO World Heritage Site in its entirety - never fail to win over visitors. The lovely lodges of Crossgate Luxury Glamping put guests near the seven mile long lake of Ullswater in the National Park, great for boating, sailing and swimming, and the Hellvellyn range of fells.

It would be hard to overstate the attraction of Wales as a holiday destination.

Hendreclochydd Farm is just two miles from the popular beach resort of Barmouth, picturesquely sited between the sea and the mountains of Snowdonia, at the mouth of the River Mawddach. The Mawddach Estuary is a bird spotting paradise and home to the Fairbourne and Barmouth Steam Railway. Little Willow Yurt is also well placed for exploring Snowdonia and attractions such as Machynlleth Centre for Alternative Technology.

Hillside Glamping and The Woolly Sheep are great glampsites from which to enjoy the stunning beaches and rich history of south Wales, including the Gower Peninsula and living history of the Gower Heritage Centre museum of rural life near Swansea and the Welsh National Botanic Garden in Carmarthenshire.

North Wales

Hendreclochydd Farm Cottage, Domes & Huts

Located in an ‘Area of Outstanding Natural Beauty,’ visit us for a unique holiday, a place to unwind, invigorate the soul or start your own adventure. You will be greeted by breath taking views over Cardigan Bay towards Bardsey Island and the Llyn Peninsula. Come stay with us and enjoy this magical location.

Our accommodation consists of a fully renovated cottage, luxury glamping in a geodesic dome and a modern and comfortable shepherds hut.

To find out more or to book please visit our website or get in touch.



www.hendreclochydd.com 07810 090868
Hendreclochydd Farm, Barmouth, Gwynedd, LL421RR

Powys

THE LITTLE WILLOW YURT

Glamping in style! Sleeping up to 6 guests, with private bathroom and undercover kitchen area..

The yurt is completely fenced off, so once you arrive close the gate and this space is all yours..

it is all off grid, so you can experience your own power supply, natural drinking water from a borehole and composting toilet, which is a fun thing to use..

You can find the little willow on Airbnb.. Airbnb is our main platform to accept bookings through..

But please don't hesitate to get in touch by either email or phone.. we will do our best to help with any booking questions..



To find out more, or to book please call, email or find us on facebook

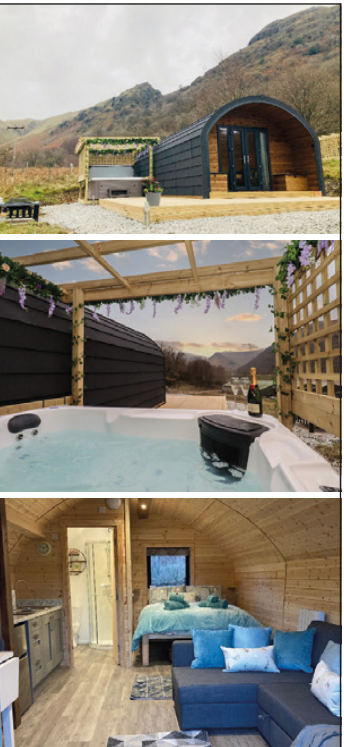
Tel. 07359 145989 Email. bex.iv@hotmail.com
facebook@thelittlewillowyurt-staycation

Lake District

Crossgate Luxury Glamping

Luxury glamping lodges in Hartsop, close to Angle Tarn, Brotherswater and Ullswater in the heart of the Lakes. We have two luxurious pods, sleeping up to four people, each with its own Hot Tub, decking and fire pit. Located on our award-winning Lake District Hill Farm you can be assured of a warm welcome and breathtaking panoramic views.

Both pods have a studio-style layout with colourful décor providing a warm, stylish atmosphere with all the facilities you need for a relaxing break in the Lakes. The surrounding countryside is perfect for avid walkers with its rolling hills and mountain peaks, so be sure to pack your hiking gear.



www.crossgateluxuryglamping.co.uk
Tel: 07824 349739 Email: howegreenfarm20@gmail.com
Howe Green Farm, Hartsop, Ullswater, Cumbria, CA11 0NZ

Swansea



A unique holiday experience set on the stunning Gower peninsula, South Wales. Relax & enjoy a luxury camping break in one of our new stylish & spacious glamping tents.

Each tent has panoramic views of the countryside. They nestle peacefully between Llanmadoc and Rhossili Hills. We are 5 minutes away from Hillend beach which is renowned for its surfing. Hillend is part of Rhossili bay which is 3 1/2 miles long and has been voted the top surfing beach in Britain and 3rd in Europe.



WWW.HILLSIDELAMPINGHOLIDAYS.CO.UK
Tel: 07588812955 or 01792 386210
Email: info@hillsideglampingholidays.co.uk

HILLSIDE GLAMPING HOLIDAYS, HILLSIDE, UPPER HARDINGS DOWN, LLANGENNITH, SA3 1JR

Northamptonshire



FEATHERBED

Featherbed B&B boasts five stunning locations, each with their own little quirky touches. Waking up to the sounds of the birds singing before putting the kettle on the fire pit for your morning cuppa, is the perfect start to the day!

Situated 5 minutes from J10 of the M40 in beautiful North-Oxfordshire countryside, what better place is there to enjoy a relaxing getaway!

01280 848281 www.featherbedcourt.net/featherbedbnb
Middle Farm, Mixbury, Brackley, Northants, NN13 5RN **f i**



Carmarthenshire

THE WOOLLY SHEEP Shepherds Huts

Our two huts are located on a small holding in West Wales on the border of Carmarthenshire & Pembrokeshire. The couples hut is situated on 4 acres of garden, and the family hut is in its own children's park. We have farm animals for children to meet and feed. Whether your visit is purely for relaxation or you're looking for outdoor adventure our luxurious huts will provide the perfect sanctuary.

All your needs are catered for with a welcome basket on arrival, quality bed linen and towels and traditionally woven "Melin Tregwynt" soft furnishings, from a local Welsh woollen mill. Enjoy a drink (or three) as you watch the sun go down from your outdoor seating area and perhaps some alfresco dining with the supplied fire pit/barbecue. Coals, kindling and logs are available to purchase at the farm along with a selection of local produce and other essentials.

www.thewoollysheepshepherdhut.co.uk
T: 07966 692716 E:jasonelerl@gmail.com

The Woolly Sheep Shepherds Hut, Henllan Amgoed, Carmarthenshire, SA34 0SJ



Unique Retreats

Perthshire, Aberdeanshire, Angus, Argyle & Bute

Scotland is simply bursting with great things to see, do and enjoy all year round, but never more so than in summer. The accommodation featured here takes you to some of the choicest locations in the land, from the heather-clad Highlands to the fascinating islands.

Many visitors go bagging Munros – ie climbing mountains over 3,000 feet – walking, cycling or kayaking around the majestic landscapes. Others explore history through the wealth of castles and ancient monuments, relax by the lochs, fish the rivers or play golf on exquisite links courses.

Wildlife spotters are spoiled for choice and Scotland’s whisky distilleries produce more variety than you could safely sample in 100 holidays. Spring and summer feature a calendar of Highland Games, full of traditional competition and entertainment.

Kirkmichael House B&B, in beautiful Perthshire, is prime hiking country near Pitlochrie, on the Rob Roy Way and famed for its hydro-electric power generation via a dam with a ‘fish ladder’ on Loch Faskally.

Portsonachan is a great place from which to explore Argyle and Bute, including the splendidly scenic west coast road route, which has a popular stop-off spot at Oban, ‘Gateway to the Isles.’

Kilry Eco-Pods are in the glorious Angus Glens of Cairngorms National Park, a top choice for of location for people seeking rare creatures such as red squirrels, golden eagles and even pine martens, while The Lily Pad in Cruden Bay is a romantic spot from which to access the North Sea coast and the sparkling ‘Granite City’ of Aberdeen.

Perthshire

Kirkmichael House B&B

Dating back to c.1850, you will find Kirkmichael House sitting on the edge of the quiet village of Kirkmichael in Perthshire. The house is ideally situated, whether you just want to rest and relax or to use it as a base to explore the area. Not only does the Cateran Hiking Trail pass through the village, there are miles of marked walking paths accessible from the doorstep.

You will find our individual rooms, comfortable and well-equipped. The Cameron Room offers a king-sized bed with ensuite bath, while the upper Loft Suite is offered with a double room, twin room, bathroom and a small lounge.

With there having been a dwelling place on the site for over 1200 years, the house has witnessed many events over the centuries, from Roman clashes with the Celts in the 1st Century, to Oliver Cromwell’s reputed stay in the house in 1653. A spring, which never runs dry and reputed to have healing properties, runs under the house and emerges on the roadside below.



www.kirkmichaelhouse.co.uk

Tel. +441250881440 Email. kirkmichaelhouse@gmail.com

Kirkmichael House Kirkmichael Perth & Kinross PH10 7NS United Kingdom

Aberdeanshire



The Lily Pod

Romany style glamping accomodation in the heart of Buchan. Sleeps 2. Private kitchen and bathroom. Fire pit. Hot tub. Sauna. Pizza Oven. Dogs welcome.

07949 971 628 Cruden Bay, AB42 0PP
Find us on [facebook@thelilypodscotland](https://www.facebook.com/thelilypodscotland)



Please mention the County Lifestyle and Leisure magazine when responding

Angus

Kilry Eco Pods In the Angus Glens

Our pods are a fantastic romantic little getaway, it is a base to explore the local Glens. The only sounds you’ll hear at night are the owls and the odd cow or sheep.

Both pods have a double bed and a camp bed. They are en-suite with a small kitchen, complete with electric hob, microwave, toaster, pots, and utensils.

There are plenty of walks from the pods or a short drive away. There are rivers, lochs, and reservoirs nearby. Also, a great spot for biking, with and without an engine. This area has lots of golf courses too. There are local wildlife hides if you are keen to photograph or simply watch the wildlife. Or just simply come, open a bottle of wine and light the campfire, or cosy up for the night.



For more information or to book direct please get in touch and quote ‘COUNTY’ Call **07753976525**
Email ecopodskilry@gmail.com www.ecopodskilry.com

Argyle & Bute

Portsonachan WILDERNESS HOTEL & SELF CATERING LODGES

Enjoy the views that won us the Scotland 2021 Most Scenic Hotel and Lodges award, take magical walks, go boating, fishing, hill trekking and wilderness swimming right outside your door.

Unwind indoors with all the warmth and comfort you could ever want. Dine in our restaurant, enjoy our full service hotel, stay in our panoramic apartments or escape into our stunning woodland and hot tub lodges. Dog friendly

www.portsonachan.com
Tel. 01866 833224

reception@portsonachan.com
Portsonachan,
South Loch Awe Side,
Dalmally, PA33 1BJ Scotland

15% discount on any bookings made for 2022. Please quote CLLM

Getaway Accommodation voucher.
5 days/4 nights – 2 people in standard en suite hotel room including Continental Breakfast. Valid for 18 months can be booked anytime mid week or weekends. Just £296

